



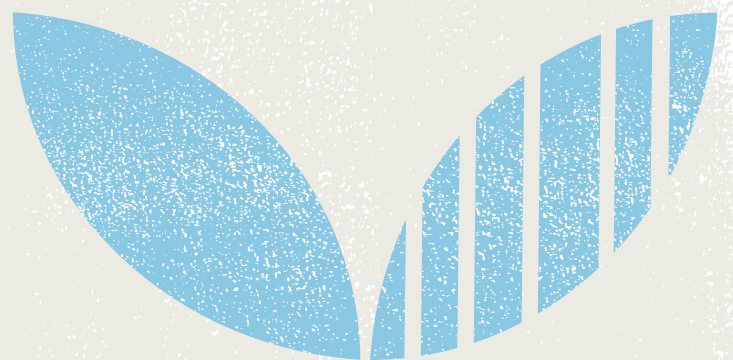
CERES CONSULTING

Capability Statement 2022

Who we are

CERES Consulting is a social enterprise that provides education, training, environmental management and facilitation services for business, government and community.

We draw on 40 years' experience in education and community development to help organisations create sustainable and connected places, communities, and a future for all.



Our story

Founded in 1982 on a former landfill site, CERES is an environmental education centre, community garden, urban farm and social enterprise hub spread across four locations, linked by the Merri and Darebin Creeks on Wurundjeri Country, Melbourne.

Our vision is for people to fall in love with the Earth again, and to that end our work spans multiple dimensions. We are a:

Home for nature and people.

School for discovery and learning.

Farm with our hands in the earth.







Market for purposeful trade.

Story of change and hope.

CERES Consulting grew from our core activities and a desire to share our stories and apply our learnings to help others.

Values

CERES' values lie at the heart of our work, and help us hold on to what is important. They guide our approach to how we engage with clients and their projects.

-  We're part of a bigger story.
-  Generosity.
-  Everyone is welcome.
-  We practise what we teach.
-  Our hope is grounded in action.
-  We work with love.

We invite clients to share with us their own values and seek to create alignment and shared project goals for greater impact.



Approach

Our experience over 40 years at CERES has shown us that the first step towards creating a healthy Earth and culture is to repair people's sense of separation from nature and each other.

This approach is deeply grounded in the theory of systems change. By reconnecting people to their own deeper values, a sense of belonging and connection to nature, we can create important changes in both systems and how we behave.

We will not just provide you with a report - we will activate any findings and create real change on a community level through providing education and training to support it.

Services

Environmental Education & Training

- **Provide training programs and learning modules** in sustainability & environmental topics tailored to organisation and community needs.
- Topics include: Food, Water, Biodiversity, Climate Change, Energy, Waste, Regenerative Living, Urban Agriculture and Best Practice Environmental Management.

Food Systems & Productive Landscapes Design

- **Conduct site assessments and provide recommendations** based on green infrastructure and horticultural best practice.
- **Plan and design** community gardens and green infrastructure.

Community Development & Placemaking

- **Facilitate community visioning** and skill-sharing workshops.
- **Conduct community and stakeholder consultations.**
- **Provide advice** and planning for community development, engagement and placemaking.

Environmental Auditing & Management

- **Measure and analyse baselines** for environmental and sustainability goals.
- **Identify key areas for improvement** on-site and across the organisation (Energy, Water, Waste, Materials, Greenhouse gas emissions).
- **Assist in setting feasible and practical targets** for monitoring and evaluation.
- **Provide advice** for environmental management planning and policies.
- **Demonstrate and research** environmental best practice examples.

Social Enterprise Development

- **Provide strategic planning and advice** for social enterprise development.
- **Demonstrate best practice** models for social enterprise.



Our people



Jane Burns

Consulting Director

Jane leads the team, and is a subject matter expert in sustainability education and environmental change. She provides behaviour change and environmental management services to schools, businesses and community organisations.



Emmanuelle Delomenede

Project Consultant

Emmanuelle specializes in the environmental impact assessment of buildings. She has worked previously as a Sustainability Consultant, providing design and operational advice to building owners. Emmanuelle joined CERES in 2015, supporting schools on whole to embed sustainability through the world-leading ResourceSmart Schools government program.



Grace WY. Mui

Environment and Sustainability Lead

Grace holds a Masters of Environment, specialising in the impacts of climate change and the environment on health and wellbeing. She brings 3 years' experience working in sustainability and applying her tertiary qualifications and science communications skills to help businesses and not for profit organisations.

Our team also draws on project-specific expertise from within the broader CERES family:

Food Systems & Productive Landscapes Design



Melissa Lawson, Farm & Food Systems Director

Melissa oversees a wide range of interrelated food system activities at CERES, including everything from building commercial kitchens to helping start the Propagation enterprise; from making coffees, to wrangling chickens. Alongside this, Melissa develops and implements training programs and enterprises around urban food systems, with a particular focus on engaging marginalised people.



Merrin Layden, Community Food Systems Manager

Merrin is passionate about providing guidance and support to communities seeking ways to come together to grow and share food. Merrin is a subject matter expert in local community food systems, communal food growing design and community gardens guidelines and policy.

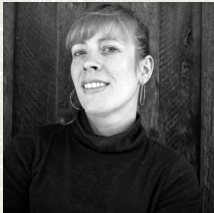
Community Development & Placemaking



Sieta Beckwith, Narrative Director

Sieta has a background in communication for social change, and specialises in strategic narrative development for organisations. Sieta currently leads a nature-based education program, aimed at building deeper relationships between communities and their places. She is passionate about the role of storytelling and aims to empower others to share their voices and stories.

Environmental Education & Training Environmental Auditing & Management



Lorna Pettifer, Learning Innovation Director

Lorna has a background in sustainability education, ecology and zoology. Lorna shares this knowledge in innovative ways through community engagement, environmental management and behaviour change programs. Lorna works with schools, organisations and communities to help integrate environmental and ethical options into their systems, lives and behaviours.

Social Enterprise Development



Cinnamon Evans, CEO

Cinnamon is passionate about the role of social enterprise in delivering environmental and social change. She has studied collaborative management and group facilitation, and has provided community engagement and facilitation services to the not-for-profit, government and industry sectors. Cinnamon has delivered multiple consulting projects on behalf of CERES over many years, including projects interstate and overseas.



Chris Ennis, Business Innovation Director

Chris founded CERES Fair Food and Fair Wood social enterprises and has also delivered multiple consulting projects on behalf of CERES, including to non-competing food box providers. Chris is a subject matter expert in food systems and social enterprise start-up and development.



Nicolas Porter, CFO

Nico is passionate about helping organisations who do good in the world, achieve financial sustainability. Nico has worked in trade finance in a bank in New York, managed a family business in Brazil and was previously Finance Manager for Outward Bound Australia. He has recently completed an MBA with a specialisation in Social Impact through the Australian Graduate School of Management and the Centre for Social Impact.

Recent projects



Hepburn Wind / Hepburn, Victoria (2019)

Hepburn Wind, located in Hepburn Shire, Victoria, is the first community owned wind farm in Australia. The 4.1 MW wind farm produces enough clean energy for over 2000 homes.

Hepburn Wind sought our expert education knowledge and experience in the development and delivery of environmental education programs for students and schools.

We designed a suite of educational resources to engage schools with community renewable energy.



BHZQ: An'Nan Wetland Park / Beijing, China (2020)

An'Nan Wetland Park is a wetlands rehabilitation project run by BHZQ Environmental Engineering Technology Co., Ltd located in Beijing, China.

Our consultants were invited to visit the site and work on the ground with local team members to assess environmental and community needs.

We assisted in wetland infrastructure design and facilitated best practice community engagement to create a natural space that is functional, inclusive and beautiful. We also provided strategic planning advice for park commercial operations in the future.



Community Gardens Peer Review / City of Greater Dandenong (2021)

The City of Greater Dandenong is a large local government area in the southeastern suburbs of Melbourne.

The Municipality invited our consultants to assist with their Open Spaces management strategy.

We provided a peer review of the Council's Community Gardens Policy and assessed benchmarks for community gardening set by various Victorian councils. This led to the development of a new Community Gardens Policy, and Guidelines which were adopted by Council.



Current projects

Bacchus Marsh Developments (BMD): Merrimu / Victoria

Merrimu is a residential growth precinct 1 hour's drive from Melbourne. With over 1,000 hectares of land, the Merrimu precinct will welcome a community of up to 20,000 new residents and help meet the demand for regional living.

BMD has sought CERES Consulting's help to achieve their vision of a sustainable, productive and community-oriented residential development at Merrimu.

The CERES team is providing advice and recommendations on low carbon living, community-based social enterprises, productive community gardens, community and environmental education.

Merri Merri Wayi / Moreland City Council

The City of Moreland is a local government area in the inner north suburbs of Melbourne that includes the Merri Creek, a significant environmental, heritage and recreation corridor in the city.

Moreland City Council sought CERES Consulting to facilitate community engagement and development processes. The aim is to balance environmental, social and cultural values, and help create a future for the creek that is a healthy and safe living place for all.

The CERES team is providing a series of workshops to gather hopes, thoughts and ideas from individuals and community groups along the creek, as well as helping put these ideas into action. A central focus of the project is supporting First Nations cultural reclamation and knowledge in helping us look after this waterway. Wurundjeri Woi-wurrung elder Aunty Gail Smith has gifted the project the name Merri Merri Wayi, meaning "we are Merri Merri."

Net-Zero 2025 / Danihers Facility Management, Australia

Danihers is a facility management business that offers property services and solutions for a range of industries Australia-wide, with a focus on education, commercial, industrial, health and pharmaceutical sectors.

Danihers has sought CERES Consulting's services to help them fulfill their vision of Net Zero 2025, a key part of their business-wide commitment to sustainability.

The CERES team is providing environmental auditing and management including measuring and analysing baseline data and setting targets to reach Net Zero. We are also providing training in sustainability and environmental management for staff, with a focus on promoting behaviour change and empowering sustainability leadership.

Net-Zero 2030 / Camberwell Grammar School (CGS)

Camberwell Grammar School is a large independent boys school in Melbourne for pre-preparatory to year 12 students.

CGS has sought CERES Consulting's expertise to provide expertise, guidance and leadership to support the school in achieving their net-zero emissions goal by 2030.

The CERES team is providing advice and recommendations to the school executive, teachers and student leaders on clean energy, responsible consumption, water conservation, and protection of nature - with education and engagement integrated into all aspects of this work.

Contact Us

General enquiries

Email: consulting@ceres.org.au

Consulting Director

Jane Burns

Email: jane.burns@ceres.org.au

Mobile: 0408 485 585

