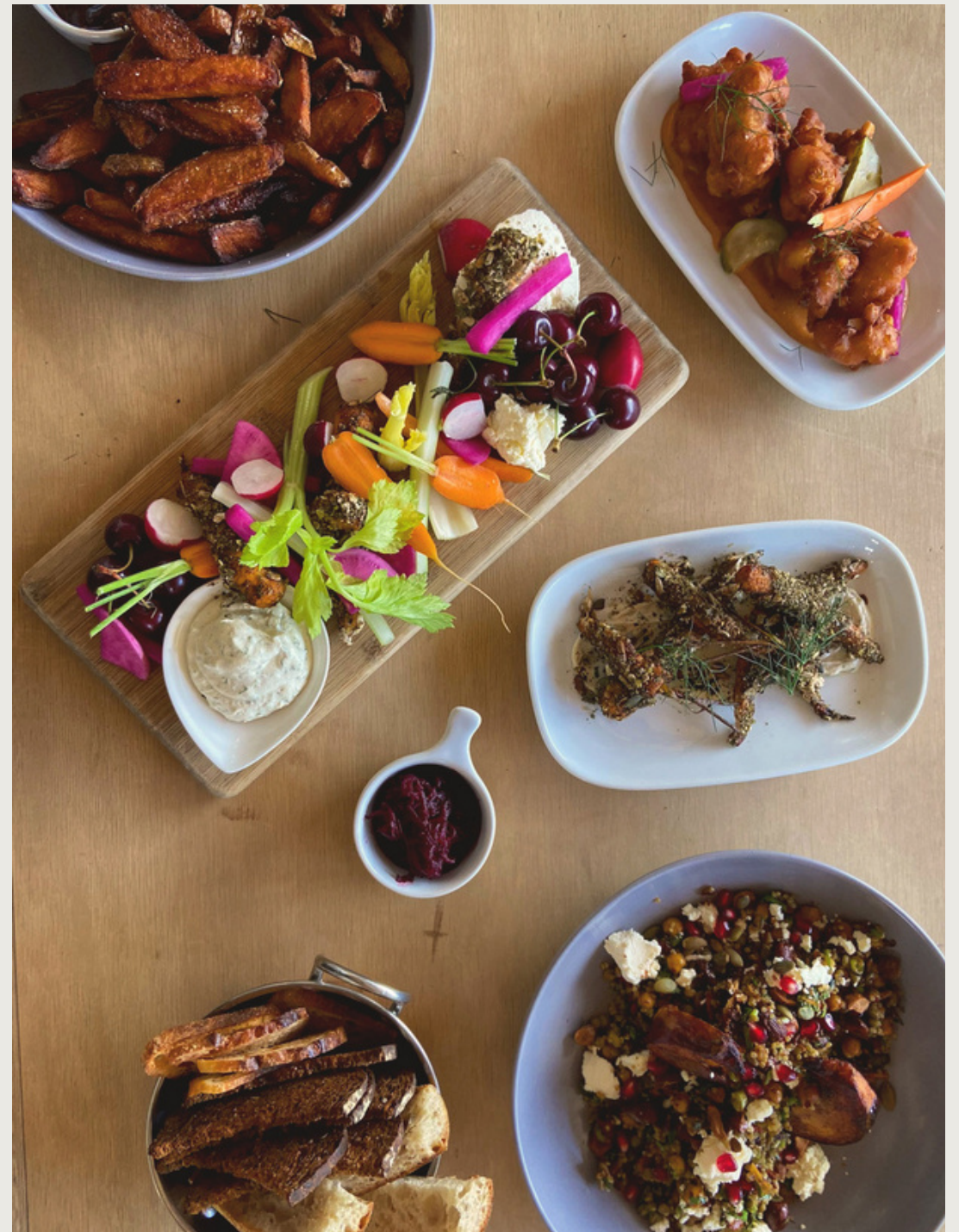


CERES

CASUAL
CELEBRATIONS





WELCOME TO CERES

A place to fall in love with the earth again.

A truly unique place, CERES Park is a sprawling 10 acres of greenery in the middle of urban Brunswick East. Nestled in a bend alongside the Merri Creek, you'll find the peace and quiet of the country just a few tram stops north of the city.

We are a not-for-profit who reconnects people to each other and the Earth - developing the practical skills, knowledge, leadership qualities and community resilience that will be needed in the coming decades. We do this in many ways: through educational experiences, regenerative urban farming and social enterprise.

All profits are reinvested back into CERES. By holding an event at CERES you're supporting our work and helping create a better future for all.

THE MERRI

INDOOR + VERANDAH + COURTYARD

Architecturally designed with stunning curves and high ceilings, the The Merri is warm and inviting no matter the weather. Doors open out onto a wraparound verandah covered in climbing vines. Perched atop the hill with views out across the kitchen garden and the treetops beyond, you'll feel enveloped in nature while you wine and dine comfortably with your guests.



Available for events on Thursday & Friday evenings from 6pm-10pm.
Capacity: 60 indoors, 120 indoors & out.

A venue hire fee of \$1,500 is applied and includes exclusive use of the space, sound system and dedicated staff.

A minimum spend of \$4,200 in drinks & catering packages is applied (\$70pp for a 60 person event).



THE MERRI

FRONT COURTYARD

For a smaller or more casual affair, The Merri's Front Courtyard balances being outdoors with staying cosy and undercover. Rustic wooden booths and group tables make it easy to mill about and gather in small groups, ideal for workplace parties or birthdays.



Available for events on Weekdays between 10am and 6pm.
Capacity: 50 people

A venue hire fee applies which includes exclusive use of the space and dedicated staff. This varies from \$300 to \$600 and depends on the length of the sitting and time of day.

A minimum spend of \$900 on food is required.

OUR MENU

CERES is home to a thriving food system including urban farms and a bakery here in Brunswick East. Our menu reflects this and changes regularly in line with seasonal shifts.

Some things that never change:

ORGANIC All our ingredients are organic, sourced from our own farms or suppliers who share this ethos.

LOCAL We source ingredients as locally as possible. In the case of our own farms this can mean ingredients travel food metres not miles.

GENUINELY SEASONAL The seasons choose the best for us. We love the challenge of adapting to what is in season and available on a day-to-day basis.

VEG FIRST The starting point of all our cooking, dairy & meat are only supporting actors in our kitchen, never the star.

WASTE NOT We know how much effort goes into producing food, so we ensure none of it goes to waste. We experiment and innovate to make use of every part. Anything unusable is composted onsite and goes right back into the soil.

We offer three catering packages to make sure your guests are happy and fed; roving canapés delivered by The Merri Team or platters and plates to share.





THINGS TO EAT

CANAPE PACKS

OPTION 1 4 small bites, 2 substantial **\$40 pp**

OPTION 2 6 small bites, 2 substantial **\$60 pp**

OPTION 3 7 small bites, 3 substantial **\$80 pp**

LUNCH PACKS

Shared platters of seasonal lunch fare:
sandwiches, wraps, pastries **\$30 pp**

GRAZING PLATTERS

Plates for sharing **\$30 pp**

Gluten free, vegetarian and vegan options available.

THINGS TO DRINK

Our wines are sourced from local organic winemakers and are made with minimal intervention. Our beers come from just up the road in Reservoir. We create our own syrups, shrubs and garnishes from the gardens to craft cocktails your guests will love.

BASIC DRINKS PACKAGE

2 HOURS	\$30 pp	x1 sparkling x1 white wine
3 HOURS	\$45 pp	x1 red white x2 beers
4 HOURS	\$60 pp	x1 kombucha

PREMIUM DRINKS PACKAGE

2 HOURS	\$40 pp	x1 sparkling x2 white wine
3 HOURS	\$55 pp	x2 red white x2 beers
4 HOURS	\$70 pp	x1 kombucha

COCKTAIL PACKAGE

Cocktails	\$15 pp (min 20)	x1 seasonal cocktail each
------------------	------------------	---------------------------



SELF MANAGED EVENTS

There are many venues in the park that are available to hire if you are happy to coordinate the event yourself. We can recommend food & beverage companies who have attended events in these areas of CERES in the past.

Below are some CERES spaces that are popular for casual celebrations, or explore all of our spaces on the Venue & Events page on our website.

THE VILLAGE PAVILION

An rustic, sheltered timber pavilion surrounded by nature in the heart of our Village area.



THE DAPUR

A cathedral ceillinged hut in our Indonesian Village, alongside the Merri Creek. The area also has a gated tropical garden you can keep all to yourself.



CERES

Enquire with our team today
venues@ceres.org.au

